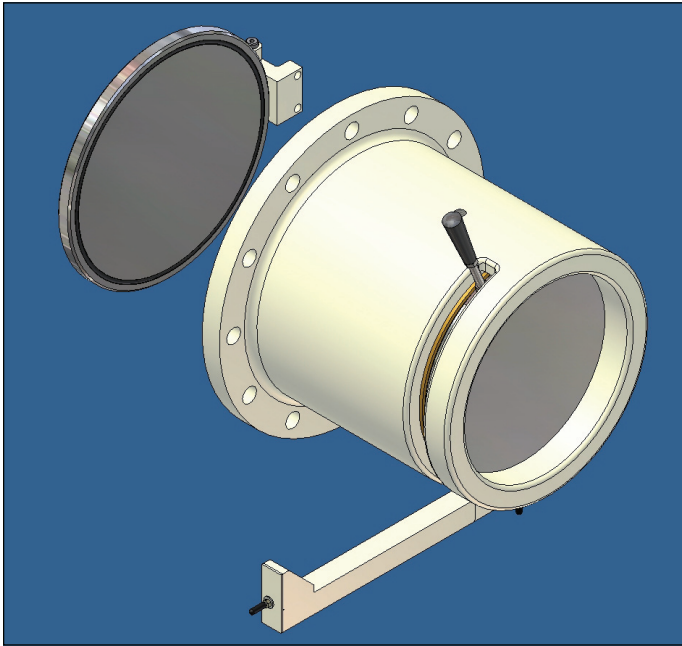


CANTY

PROCESS TECHNOLOGY

ROLLING DOOR



THE CANTY ADVANTAGE

The Canty Rolling Door is a Quick Opening access door suitable for both positive and negative pressure sealing without modification. The door is a flat stainless steel or carbon steel disk that rolls into position through a slot behind the door. The Seal ring carries two o-rings and is spring loaded to provide initial seal contact. One o-ring seals against the door and the other seals against the wall of the cylinder. The design is suitable for high pressure, low pressure, or vacuum service. The closure can be used for either internal or external service and provides safe, instant access to any vessel.

CANTY MEDICAL LOCKS

The Canty Rolling Door Closure was specifically designed for use on hyperbaric chambers as a means to access and support a chamber safely while under pressure. It has served the medical, diving and research industries for over 40 years as the standard in safety and convenience.

CANTY ENGINEERING

The Rolling Door closure is the safest, quick opening closure ever designed. What makes it unique is the method for door engagement. All other types of closures have doors that swing out or slide out away from the end of the reactor barrel in the same direction that the pressure force acts. If pressure is not completely relieved the door can blow open with great force and velocity and the potential to injure personnel. The Canty Rolling Door slides out of the barrel at a direction perpendicular to the pressure force, and therefore the Canty door never retains potential energy from process pressure and can never be accelerated by residual pressure. Because the door moves perpendicular to the pressure a separate safety interlock is not required.

FEATURES

- Conforms to ASME Section VIII
- Pressure Ratings to 10,000 psi
- Forged Construction
- Positive and Negative Pressure Applications
- Flanged or Weld Prep Mounts
- Vertical or Horizontal Operation
- Flanged Units Mount to ANSI Flange Dimensions
- Sizes 6" - 20" Available

ADVANTAGES

- Always-Safe Door Actuation
- Fail-Safe Design - Will Not Blow Out if Improperly Used
- Anyone Can Easily Operate
- Separate Safety Interlock Not Required
- Positive and Negative Pressure Sealing
- Door moves Laterally, The Only Moving Part
- No Space Required in Front of Closure for Opening - Minimizes Space

APPLICATIONS

- Hyperbaric Medical Locks
- Diving Decompression Chambers
- Chemical Reactor Access
- High Pressure Research Vessels
- Filtration Canisters
- Sanitary Vessel Access
- Petrochemical (Pipe Pigging)

Ordering Information

HOW TO ORDER: Select the appropriate symbols and build a part number as shown:

EXAMPLE:

C 1 2 A A 1 B A 1 2

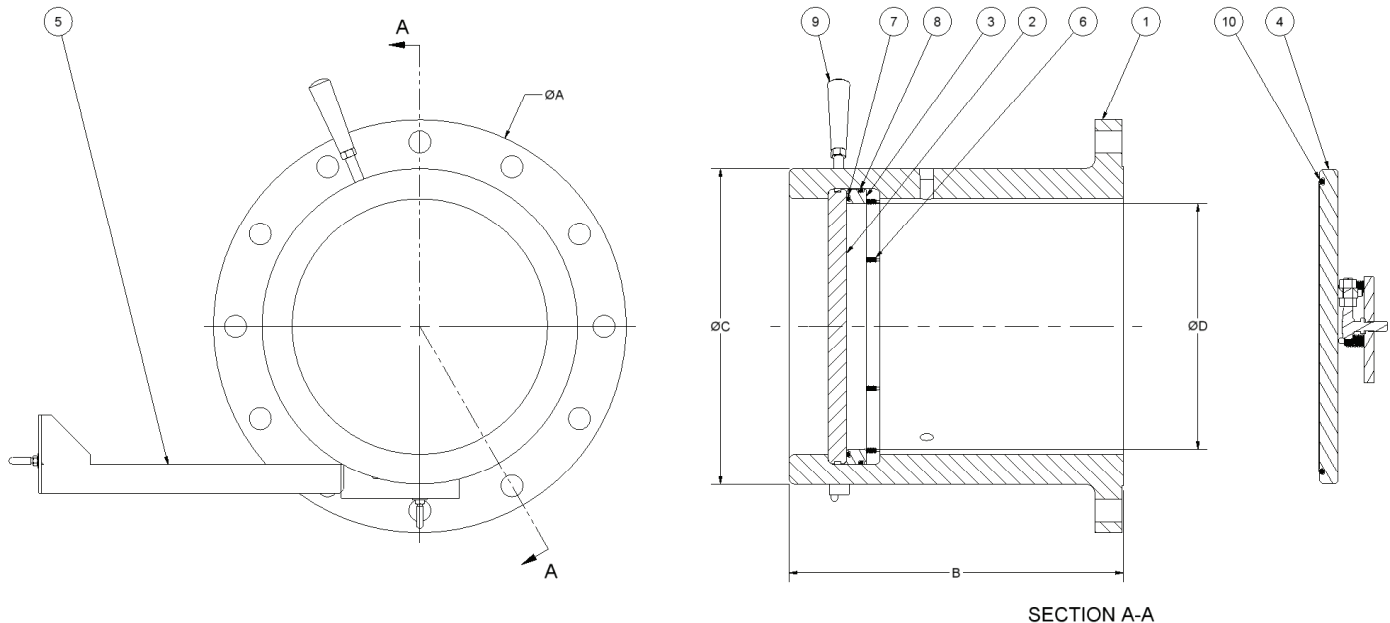
MODEL 1 - RDFB - Rolling Door Flange Bolted 2 - RDW - Rolling Door Welded		OPENING 1 - Right Opening 2 - Left Opening
SIZE 1 - 6" 2 - 14" 3 - 18" 4 - 20"		O-RING MATERIAL (Wetted) 1 - Buna 2 - Viton® 3 - Silicone 4 - EPDM 5 - Neoprene
PRESSURE A - 150 psi B - 300 psi C - 600 psi		BRACKET MATERIAL (Non-Wetted) A - Carbon Steel B - Stainless Steel
FORGING MATERIAL (Wetted) A - Carbon Steel - SA350 LF2		DOOR MATERIAL (Wetted) A - Carbon Steel B - Stainless Steel
SEAL RING MATERIAL (Wetted) 1 - Aluminum Bronze		

Dimensional Information

Model	A - 150 LB	A - 300 LB	B	C - 150 LB	C - 300 LB	D
6" - RDFB	11	12.5	12	7.75	8.12	5.5
14" - RDFB	21	23	17	16	16.75	12.5
18" - RDFB	25	28	25	20	21	16.5
20" - RDFB	27.5	30.5	25	22	23.12	18.5

Shown with Optional ANSI Flange
Consult Factory for Higher Pressure Ratings

ITEM	QTY	DESCRIPTION
1	1	FORGING
2	1	OUTER DOOR
3	1	SEAL RING
4	1	INNER DOOR
5	1	SUPPORT BRACKET
6	1	SPRING PLUNGER
7	1	O-RING
8	1	O-RING
9	1	HANDLE
10	1	O-RING



CANTY JM Canty Inc
JM Canty Intl Ltd

Buffalo, NY USA
Dublin, Ireland

Ph: (716) 625 4227
Ph: +353 (01) 882 9621

Fax: (716) 625 4228
Fax: +353 (01) 882 9622